

Iowa Bonsai Association Newsletter

www.iabonsai.org

<https://sites.google.com/site/cedarrapidsbonsai/>



August 2022

Volume 94, Issue 7



From the Editor

Hey There, Bonsai Enthusiasts!
August is a busy month for the clubs – The IBA has a workshop with Julian Tsai and demos at the Des Moines Botanical Garden, followed immediately by the Iowa State Fair show. The EIBA has an exhibition at the Newbo Market in Cedar Rapids. And then, of course, there are regular

club meetings. Check out the Calendar of Events for details. I haven't heard much from the Members this month. This is probably because there's a lot going on and we're all pretty busy. I've been extremely busy working on infrastructure and the cooler weather that we had the last week of July was a great blessing in that department. However, it did mean that I was (and HAD TO BE) outside working rather than inside writing articles. So more promises for interesting reading in future issues - the article on the ABS Learning Seminar being again deferred!

Please consider writing an article for the Newsletter.

Remember that this is your club! If you have ideas, thoughts or comments, we'd love to hear from you. Please feel free to contact me at any time.

Susan Daufeldt

scdaufeldt@icloud.com

sdaufeldt@daufeldtlawfirm.com

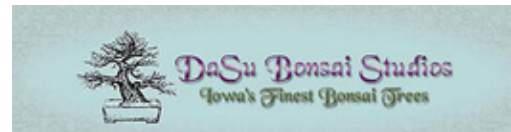
(319) 430-3822

Inside This Issue

From the Editor	1
From the IBA President	1 - 2
EIBA Vice President's Report	2 - 3
Calendar of Events	3 - 4
Member Activities	5 - 6
Timely Tips	6
Bonsai Inspiration	7
Bonsai Classifieds	8

Corporate Sponsor

DaSu Bonsai Studios



www.bonsaitrees.com/

From the IBA President

Dear IBA members and friends,

Good day. I hope you and your trees are doing well. The IBA's July meeting was a huge success with a lot of new members showing up to re-pot the trees they styled in the Bonsai for beginners' class that Ron, Sara and

I taught at the Greater Des Moines Botanical Garden. The class was full, and we had a great time working with the 12 students. Members of the IBA lead Bonsai for beginners classes at the Greater Des Moines Botanical Gardens and Ted Lare Garden Center. If interested in attending one of these classes, please reach out to the centers and inquire about upcoming Bonsai Classes. The next one will be at Ted Lare Garden Center in September, so if you're interested in that please contact Ted Lare directly at 515-981-1075.

Julian Tsai will be headed to Iowa in August and **we still have a one slot in the workshop on Friday August 12th.** Contact Scott Allen, 515-480-4437, if interested. Julian will also be doing demos at the Greater Des Moines Botanical Garden on Saturday August 13th and he'll be judging the Iowa State Fair Show on Sunday August 14th. David Richmond has been hard at work getting things organized for the ISF show and its sure to be another great show.



The next IBA meeting will be Saturday August 20th from 9-1 at the Greater Des Moines Botanical Garden. Bring a tree/trees to work on or just come observe and ask questions. That's why we're here. The meeting locations within the GDMBG change from month to month so please check with the front desk for meeting location.

Hope to see you all soon!

Scott Allen
IBA President

EIBA Vice President's Report

The Eastern Iowa Bonsai Association held its second display at NewBo City Market in Cedar Rapids on Saturday, July 16th. The day was nice and the crowd flow was fantastic - at times it was overwhelming. We had 35 trees on display, from Mame to the large Pines. EIBA Members Buck Stark, John Clemens, Dennis Molumby, Dan Molumby, Noah Butler, Bill Englert, Joe Trumm and Corey Miller exhibited trees. It was clear to see that the members took pride in their trees and the work it took to get them ready for the display. Two of the exhibiting Members brought trees which were a work in progress. Members discussed possibilities for those trees and some work was done on them during the day. It was nice to see the members answering many questions about the trees, explaining why specific things were done to the trees and providing growing tips.

This display was the best that the club has had in the last few years. It is our hope that this trend will continue and that more new members will join us. I believe that in the last two months we have added 10 new members, which is fantastic. Our next display will be on August 20th at NewBo in Cedar Rapids from 9:00 am to 3:00 pm.

EIBA's other event for the month was on July 23rd. The day was a scorcher, but that did not stop the EIBA club members from coming out to Ellis Park for our annual club picnic and workshop. Twenty-one

people attended. Some Members brought trees to work on, while others brought trees, pots, tools and miscellaneous items to sell. The day was HOT, but members enjoyed a lunch of brats, with all the fixings, and enjoyed working on their trees and purchasing items for their hobby. Everyone had a great time and enjoyed having conversations with other Bonsai enthusiasts. The get together started at 9:00am and lasted until 3:00pm.

Bill Englert

EIBA Vice President

bandrenglert@mchsi.com

Calendar of Events

Note: IBA Activities are also on the IBA website. Click on the “Calendar” Link.

August 11, 2022, 7:00 pm

EIBA Board Meeting via Zoom. Contact an EIBA Board Member for more information, if you wish to attend.

August 12, 2022

IBA workshop with Julian Tsai. For more information, see the IBA President's report. Contact Scott Allen to register.

August 14, 2022

Iowa State Fair Show.

August 18, 2022, 7pm (Thursday)

EIBA Club Meeting: Space for Program Topic. Pierson's Flower Shop & Greenhouse, 1800 Ellis Blvd NW, Cedar Rapids, IA 52405. For more information, contact Bill Englert (319) 471-1594.

August 20, 2022, 9 am to 1pm (Saturday)

IBA Meeting and Open Study Group & Program at the Greater Des Moines Botanical Garden, (Check with the front desk for location within the Garden). Program: Mugo work. Suiseki, viewing stones and round table discussion.

August 20, 2022

EIBA Newbo Exhibition. Contact Bill Englert (319) 471-1594 for more information.

August 19-21, 2022 (Thurs-Sun)

Midwest Bonsai Society August Exhibition, Chicago Botanic Garden, 1000 Lake-Cook Rd., Glencoe, IL.

September 8, 2022, 7:00 pm

EIBA Board Meeting via Zoom. Contact an EIBA Board Member for more information, if you wish to attend.

September 15, 2022, 7:00 pm (Thursday)

EIBA Club Meeting. Pierson's Flower Shop & Greenhouse, 1800 Ellis Blvd NW, Cedar Rapids, IA 52405. For more information, contact Bill Englert (319) 471-1594.

September 17, 2022, 9 am to 1pm (Saturday)

IBA Meeting and Open Study Group & Program at the Greater Des Moines Botanical Garden, (Check with the front desk for location within the Garden). Program: Show preparation, formal display and brief round table discussion.

September 30, 2022 (Friday)

Set up IBA Reiman Garden Show.

October 1 & 2, 2022 (Sat/Sun)

IBA Reiman Garden Show, Ames, IA

August 20, 2022

EIBA Newbo Exhibition. Contact Bill Englert (319) 471-1594 for more information.

August 19-21, 2022 (Thurs-Sun)

Midwest Bonsai Society August Exhibition, Chicago Botanic Garden, 1000 Lake-Cook Rd., Glencoe, IL.

September 30, 2022 (Friday)

Set up IBA Reiman Garden Show.

October 1 & 2, 2022 (Sat/Sun)

IBA Reiman Garden Show, Ames, IA.

Members Activities

EIBA Newbo Exhibition - July 2022

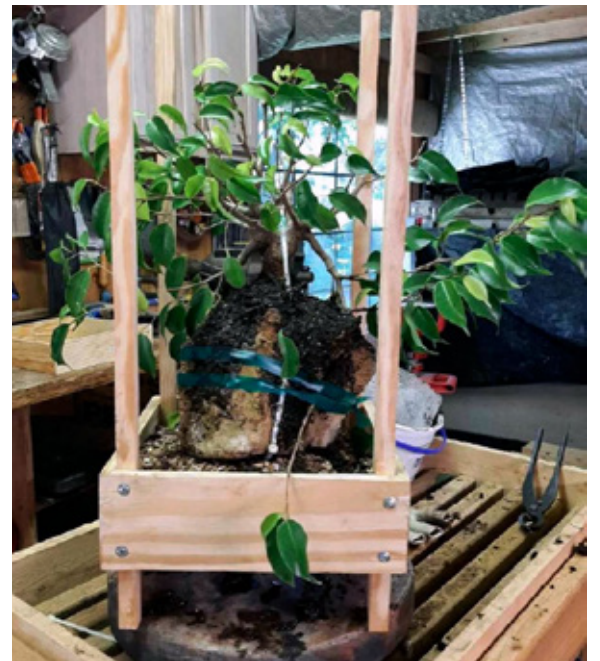


EIBA Summer Picnic

EIBA Members and friends had a productive time on Saturday, July 23, 2022, at Ellis Park in Cedar Rapids, IA.



At the June IBA meeting David Richmond participated in the Ficus re-potting program. One tree was planted in a Sara Rayner pot and the other tree in the above photo was planted in a training pot. Both trees are doing well.



IBA Member Dan Morton has been working on an interesting project. The project involved air-layering, grafting and root-over-rock planting. Look for an in-depth article about this adventure in a future issue of the Newsletter.

At my place, I'm very busy working on infrastructure. Construction is well underway, but there is still a lot to do and August is upon me, with the Julian Tsai workshop, the State Fair Show and the Midwest Chicago Show.... !

Susan Daufeldt
scdaufeldt@icloud.com
sdaufeldt@daufeldtlawfirm.com



Send me a picture or two - even if you have already contributed. Or just a few lines about what's going on with your trees!

Timely Tips - What to do in August

Cat Nelson

Mid summer marks the switch to a balanced N-P-K fertilizer, meaning that it has approximately the same amount of each of the major nutrients. If the temperatures are high, aim for feeding in the early morning or evening when temperatures are cooler. If temperatures stay in the high 90s for extended periods reduce the amount of food, or stop feeding altogether, if you can't do so during a 'cooler' time of day, as trees aren't very active in high heat conditions. Too much fertilizer when trees are heat stressed can burn the leaves.

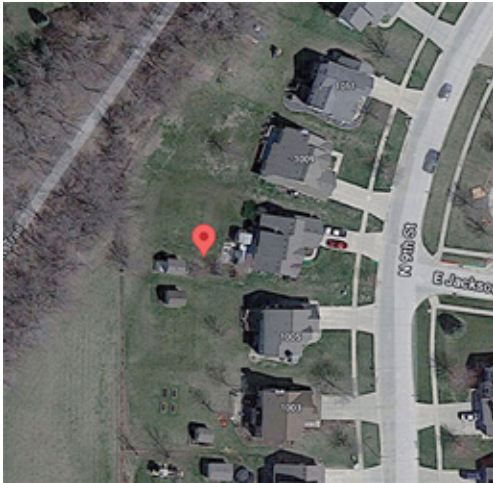
Shade cloth is a good idea for hot days or - for a few trees - moving to afternoon shade conditions and water, water, water - this summer has been hot and seems to be on track for staying that way. Don't be surprised if trees slow down their growth. Many species go into a type of heat / dry season dormancy during the mid-summer. During the hottest part of the day the stomata on the underside of leaves close up to help reduce moisture loss; this slows down photosynthesis. It's good practice when it's hot - especially if a pot has really dried out - to water first with plain water and then water a second time with the fertilizer.

It's not too late to repot tropicals, watch out for extremely high heat and keep them in shade afterwards. Tropicals grown under extra lights in the winter can still be pruned, it's a bit too late for trees that will be grown only next to windows. Check wire as tropicals can fatten fast in warmer temperatures, especially ficus.

Light touch-up pruning of deciduous can be done in August, though it is often a month where trees will look 'out of shape'. You don't want to heavy or hard prune any deciduous this late in the season as that could cause a push of growth that won't mature, or set next years' buds, in enough time for fall. Touching up for display at the Fair shouldn't put a major strain on trees as long as it's just a few bits here and there.

In past years I've had luck repotting conifers at the end of August, with how hot it's been so far this year I'm not sure that I'd try my luck. I do needle prune my two-needle pines (most commonly the Japanese Black Pines) in the later half of the month. Again, I will only do so if temps are finally out of the 90s. Part of learning bonsai is learning when not to do things; most bonsai techniques are mild stressors, you want to avoid compounding that stress (like when high heat would also stress the tree). Signs of a stressed tree would include burnt edges to leaves, lackluster color or slight yellowing of needles. It's better to get the tree healthy and then correct developmental issues than push a weak tree too far.

This photographic image was captured on the morning of July 29, at 7:30 AM. July 29th is the day after the New Moon. Imagine this scene as a Penjing Landscape.



You can find this imaginary landscape here, 41°22'11.3"N-93°32'53.0"W (See location indicated on the satellite photograph). In this location the New Moon began at 5:55 PM on July 28th, 2022.

Internationally, the New Moon is considered the start of a lunar cycle. The word “Moon” has its origins in the Latin word “metri,” which means “to measure,” and the Latin word “mensis,” which means “month.” Basically, the word “Moon” in Latin means “used to measure the months.” From our perspective, the Moon appears totally dark in the new phase of the cycle.

You can learn more about the phases of the Moon at this URL (See URL Below)

<https://www.timeanddate.com/moon/phases/>

A New Moon is essentially the opposite of a full Moon. It takes the Moon 29.5 days to orbit Earth. During a New Moon we see the dark side of the Moon. There are many pieces of music that reference the Moon and there are many traditions based on the phases of the Moon. A British rock band from the seventies called Pink Floyd sang “I’ll see you on the dark side of the Moon.” Some of our early agricultural traditions is based on the lunar calendar. In the past, farmers used the Moon’s phases to judge when planting and harvesting were optimal. Some current Farmers still use these traditional methods for deciding when to plant and harvest.

You can learn more early agricultural traditions based on Lunar cycles at this URL (See URL Below)

<https://www.farmersalmanac.com/why-garden-by-the-moon-20824>

I use my knowledge of the Moons phases to aid me in tending my Bonsai trees. At the full Moon in April, I bring my deciduous trees out of winter storage and at the three quarter Moon, during this same cycle, I will bring my Junipers out of storage. During the full Moon in May, it is time to bring my tropicals out of storage and defoliate them. When the New Moon happens in June, it is time to select the trees that I will display at the Iowa State Fair Bonsai Show. By the New Moon in July, the trees that I have selected for the fair will be ready.

Disclaimer: This method works for me. But it may not work for you in your situation.

Bonsai Classifieds

FOR SALE: IBA T-Shirts – \$25.00 each. Unisex sizes m l xl xxl xxxl. We still have some of the new T-Shirts as well as some of the old ones. New shirts are \$25, the second generation shirts are \$20 and first generation shirts are \$15. All proceeds will help grow bonsai right here in Central Iowa.



DaSu Studio, lowman@netins.net

Has LOTS of Tropicals, new dwarf conifers and 128 new companion plants - many varieties at good prices.

FOR SALE: LAST CALL - Trident Maple Seedlings from \$10.00, depending on size. These are fun, rewarding, fast developing and very forgiving trees for beginners to learn deciduous work. I have other deciduous trees available. Contact me if you are interested. **WHATEVER HAS NOT BEEN SOLD TO PEOPLE IN IOWA WILL GO TO THE CHICAGO SHOW (AUG 19, 2022) FOR SALE. I WILL NOT BE BRINGING THESE BACK TO IOWA. WHATEVER DOES NOT SELL AT THE CHICAGO SHOW ARE GOING TO INDIANA.** Susan Daufeldt, scaufeldt@icloud.com, sdaufeldt@daufeldtlawfirm.com, (319) 430-3822.

FOR SALE: Collected by Andy Smith in spring of 2019 and repotted into this Sara Rayner pot in the Spring of 2021. This is a very old and lovely collected tree. It measures approximately 2' 4" tall from the bottom of the pot to the apex of the tree – a very manageable size for any practitioner. Currently, new growth along the trunk obscures good movement in the trunk and fabulous old bark. New growth has been left to allow choices for a new owner. The tree is for sale only because I am unable to work on Junipers anymore. It is for sale for the combined original cost of the pot and the tree - \$450.00.

Susan Daufeldt, scaufeldt@icloud.com, sdaufeldt@daufeldtlawfirm.com, (319) 430-3822.



Utah base of trunk, showing old bark.

FOR SALE: Pumice 50lb bag \$30 , 5 gallon bucket \$15 Need to bring buckets. Medium Akadama \$47 a bag for IBA Members and \$55 a bag for non members. Bio Gold fertilizer from Japan, \$92.50 per 5kg bag. Contact Scott Allen or Tim Peterson.
Lava - Contact DaSu.

Articles in this newsletter are the intellectual property of the authors. If information or ideas are excerpted, paraphrased or duplicated in any way, proper credit must be given to the originator. Authors of articles published here also are expected to respect intellectual property rights and to give credit to sources they use. Neither the Iowa Bonsai Association nor the Eastern Iowa Bonsai Association are responsible or liable for opinions expressed or advice given by contributors in this newsletter. The Publication Staff welcomes letters to the Editor, but reserves the right to