

Iowa Bonsai Association Newsletter

www.iabonsai.org

<https://sites.google.com/site/cedarrapidsbonsai/>



July 2022

Volume 93, Issue 6



From the Editor

Well! June has been a month of unparalleled upheaval for your Newsletter Editor. I had the great privilege of attending the ABS Learning Seminar in Olive Branch, Mississippi, Memorial Day weekend. It was terrific and I hope to have an article for you on that experience Next month. Unfortunately,

flying is perilous these days – so first there was Covid. I recovered from Covid, had the privilege of participating in Todd Schlafer's workshop, got food poisoning – like hospitalized food poisoning – Then the green house that was supposed to arrive last October showed up last week.... My bonsai yard is completely torn apart. I have a huge amount of work to do to put it back together. Thank the Lord it is July! But less than six weeks from the Fair! Hope everyone is looking forward to that event and the Julian Tsai workshop and demonstrations.

Cat Nelson is taking a work-related break from Timely Tips this month, but we have Timely Tips, nevertheless. We have a couple of great tree progression pictorials from Noah Butler, a bit about Club Events – But the real reading for this month is Dave Richmond's article about Sara Rayner. Dave made the trip up to Red Wing, MN, and had the opportunity to talk with Sara and buy great pots. Thanks so much, Dave, for sharing the experience!

Please consider writing an article for the Newsletter. Remember that this is your club! If you have ideas, thoughts or comments, we'd love to hear from you. Please feel free to contact me at any time.

Susan Daufeldt
scdaufeldt@icloud.com
sdaufeldt@daufeldtlawfirm.com
(319) 430-3822

Inside This Issue

From the Editor	1
From the IBA President	2
EIBA Vice President's Report	3
Calendar of Events	3 - 4
Sara Rayner	
My Journey to Meet a Legend	5 - 7
Tree Progressions	8 - 9
Member Activities	9 - 11
Timely Tips	12
Bonsai Inspiration	13
Bonsai Classifieds	14

Corporate Sponsor

DaSu Bonsai Studios



www.bonsaitrees.com/

From the IBA President

Dear IBA members and friends,

Summer is in full swing and we've all be dealing with HOT days. During these times it's important to stay connected with your trees and make sure they have the water they need as well as protection from the hot sun for those varieties that just don't like to be baked.

Ron, Tim, and I just returned from our collecting trip to Wyoming and we had perfect weather. We all came home with some awesome trees and I think Ron will be writing an article for the newsletter at some point. As always it was an adventure to say the least and by the time our trip was over we all needed some rest.



Todd Schlafer's workshop was great and some wonderful trees were made. Todd works hard to make sure everyone learns along the way. Todd has been building out his new garden in the Denver area and it's really starting to take shape. Follow him on Facebook and subscribe to his Instagram feed. Hopefully we'll be able to get Todd to do more workshops for us in 2023.

The Iowa State Fair show is scheduled for Sunday August 14. Hopefully you've all registered to show a tree or three. Julian Tsai will be here to judge the show. He'll also be doing a workshop at my place on Friday, August 12th (still one participant spot open) and demos at the GDMBG on Saturday August 13th. Check Julian out here. <https://bontsaicom.wordpress.com/about/>

Friday August 12th with Julian Tsai at my place. 9-5 \$100 – Slots available

The IBA will provide lunch for all participants in the above workshops.

There are also silent observer options at \$20 per individual but lunch isn't provided for silent observers.

If you want to register for the above contact me and I'll get you registered.

We still have a few gallon bags of pre mixed soil to sell at \$10 a bag and there are still a few bags of medium akadamaup at \$47 a bag for club members and \$55 a bag for non-club members. Not sure how long we'll have it so I recommend getting some while we have it.

We sold a few T-Shirts at the Spring Show but we still have a few of each T-Shirt. New shirts are \$25, the second-generation shirts are \$20- and first-generation shirts are \$15. All proceeds will help grow bonsai right here in Central Iowa.

Hope to see you all soon!

Scott Allen
IBA President

EIBA Vice President's Report

The EIBA held its first Bonsai display of this year on June 4th at NewBo City Market in Cedar Rapids. The club displayed 25 different trees, all sizes, from Shohin to the large Ponderosa Pine. The display drew a large crowd with lots of questions about the trees on exhibit. During the day, John Clemens was working on trees and kept very busy answering questions. We had several interested people sign up to receive club information. All in all it was a great day with good weather and crowd flow.

The EIBA held its monthly June meeting on June 16th. John Clemens spoke about "what to do in the summer" with your trees and he showed the members how he wired two of his own trees. Then he passed out branches for those attending to practice wiring. Denny Molumby talked and demonstrated about his Shohin trees. He discussed his techniques and methods for shaping and pruning his trees along with his expectations of what he is trying to achieve. Some of the members brought their own trees that they had questions about and worked on them. The meeting was a good informational get together for all that attended. We also had 3 new people join the club. This is one positive benefit from our displays at NewBo.

EIBA's club picnic and tree workshop will be at Ellis Park in Cedar Rapids on July 23rd. from 9-2. More information will be forthcoming as time draws near.

Bill Englert

EIBA Vice President

bandrenglert@mchsi.com

Calendar of Events

Note: IBA Activities are also on the IBA website. Click on the "Calendar" Link.

July 14, 2022, 7:00 pm

EIBA Board Meeting via Zoom. Contact an EIBA Board Member for more information, if you wish to attend.

July 16, 2022, (Saturday) 9 am to 1pm

IBA Meeting and Open Study Group & Program at the Greater Des Moines Botanical Garden, (Check with the front desk for location within the Garden). Program: Tropical Tree repotting. Bring a tropical if you want to repot. Club Soil available for purchase. Formal display and roundtable discussion.

July 16, 2022

EIBA Newbo Exhibition. Contact Bill Englert (319) 471-1594 for more information.

July 23, 2022, 9am to 2pm (Saturday)

EIBA Club Picnic and Workshop. Ellis Park, Cedar Rapids, IA. For more information, contact Bill Englert (319) 471-1594.

August 12, 2022

IBA workshop with Julian Tsai. For more information, see the IBA President's report. Contact Scott Allen to register.

August 14, 2022

Iowa State Fair Show.

August 20, 2022, 9 am to 1pm (Saturday)

IBA Meeting and Open Study Group & Program at the Greater Des Moines Botanical Garden, (Check with the front desk for location within the Garden). Program: Mugo work. Suiseki, viewing stones and round table discussion.

August 20, 2022

EIBA Newbo Exhibition. Contact Bill Englert (319) 471-1594 for more information.

August 19-21, 2022 (Thurs-Sun)

Midwest Bonsai Society August Exhibition, Chicago Botanic Garden, 1000 Lake-Cook Rd., Glencoe, IL.

September 30, 2022 (Friday)

Set up IBA Reiman Garden Show.

October 1 & 2, 2022 (Sat/Sun)

IBA Reiman Garden Show, Ames, IA.

Sara Rayner
My Journey to Meet a Legend
David Richmond

“A journey of a thousand miles begins with a single step.”

This is a quotation translated into English from Chapter 64 of the *Tao De Ching*, ascribed to a Chinese philosopher called Lao Tzu. Lao Tzu may have lived in China during the 6th century BC. The legend of Lao Tzu originated at this time, whether or not there was actually a person by this name. Every time I am about to go on a journey, literally or figuratively, this quote always comes into my mind.

On June 12, 2022, I was on a journey to meet a Bonsai legend. I had heard of an artist in Redwing, Minnesota, who makes bonsai pots - Sara Rayner. I needed a new pot for the tree that Larry Totten gave me. This tree can be seen in the September 2021 issue of the *IBA Newsletter* in a article called *Funsai into Bonsai*.

I first heard about Sara when I began practicing the art of Bonsai about 18 years ago. I witnessed a member of the IBA talking to another saying, “look it’s a Sara Rayner pot.” This was followed by intense ogling of this particular piece of pottery. As the years went by, I started recognizing her style. Her pots were always physically striking with classic lines and contours. Often there are textures or rounded elements incorporated in the design of the pottery. Sara’s glazes envelop the clay vessels. It is as if the pots were finished with a Fine Art painting which completes the look of her pottery.



This Journey begins with a single step



Left to Right: Marcella, Sara's puppy and Sara Rayner

her farm outside of Redwing from where I was staying in Lakeville, Minnesota. My wife, Carol and I were staying with my Sister-in-Law, Marcella, and she would drive us there.

Sara has been fashioning pottery since the seventies. She told me that she started out trying to sell her earlier work at Art Fairs. She did not have much success selling her pottery at these venues.

As I prepared to meet with Sara, I wondered, “How will this turn out” “Who am I really going to meet today?” After several e-mail exchanges, we agreed on a date and time to meet so that I could purchase a pot for the tree that Larry gave me.

I called Sara on the 12th at 10:15 AM to ask for directions. It would take about 45 minutes to get to



Sara's studio in an old converted grainery

Sara found a niche making Bonsai pots and was very successful. I find her work to be technically excellent while her artistic expression is sublime. Each pot I have seen is a true work of art.

Marcella found a couple of spherical pots on a shelf in the studio. These pots were thrown on the wheel and were very delicate. The pots were perfectly circular and very thin. They were made of a porcelain clay body with a fascinating pattern created by a salt fired finish. These two pieces were made by Sara before she started making Bonsai pots. They were amazingly crafted, as masterfully as any porcelain ware that I have ever seen. The soul of the artist that makes Bonsai pots was infused in these pots as well.



*Above and Left:
Sara Rayner is talking about her work*

*Below:
Sara Rayner's work.*

I asked Sara what she liked about forming clay into finished vessels. "Forming the clay is very satisfying. I have a plan for how it should look." She added, "There are some things I don't like." "I don't like working with the bisque fired clay." "To me the texture is like fingernails on a chalkboard." "The feeling is very uncomfortable." She then made a statement that reveals the true artist: "I sell these pots so that I can get more clay and materials to work with."



If you look at Sara Rayner's website you will find a link that reads "Other Products."

See Sara's website at this URL

<https://sararaynerpottery.com>

If you click on the other products link you will find that she also sells honey. I asked Sara what she likes about harvesting honey. Her response was, "Bees are alive. I like bees swarming. I like the smell and the warmth of the bees. The honey is just a plus." She added, "I haven't had time to deal with the bees this year because I got my new puppy."



*Above and Left:
Sara Rayner's work*



At the beginning of this journey I had a question, "Who am I really going to meet today?" I met Sara Rayner, a very gifted, dedicated artist and a very beautiful human being.



This Journey ends very much like it started from my perspective.

Tree Progressions

Noah Butler

EIBA Member Noah Butler sent in some great progression pictures of a couple of his trees.



Shimpaku Juniper purchased from Evergreen Gardenworks as raw stock in winter/spring 2017. This is the picture used by the grower to advertise the tree for sale in 2017.



Left: The tree in 2021, after letting it grow to restore foliage density for a few years and after re-potting the tree more upright in a Tokonome rectangle.



The tree after Noah styled and wired it in June 2022. It's come a long way. The plan moving forward will be to continue to edit the foliage to keep it somewhat sparse/light such that it complements the relatively thin and sinuous trunk.

And here's a tree that may be familiar to several of our EIBA members. Noah acquired this Rocky mountain juniper from John Denny in October 2020. This tree was collected by Randy Knight in 2014 and was purchased by John in 2016. Todd Schlafer set the initial structure during a study group at John's garden in 2019.

In the spring of 2021, Noah re-potted the tree with assistance from Bruce Pendland. During the re-pot, he rotated the tree to reveal more of the live vein, tilted the tree to the right to reduce the horizontal plane of the first branch and angled it more forward towards the viewer.



Right: The tree as received from John and sitting in Noah's garden in November 2020



The tree in April 2022, one year after the re-pot and before Noah's initial styling work began.



The tree in June 2022, after Noah styled, wired and pruned.

The plan for this tree includes a really nice large round unglazed pot made by Sam Miller. It will go into the pot in either the spring of 2023 or 2024.

Members Activities

EIBA Newbo Exhibition - June 2022

EIBA Member Dave Spicknall and EIBA President John Clemens talk at the Newbo Exhibition in June.



A shohin display at the Newbo Exhibition.



The Newbo Exhibition June 2022.

A shohin display during set up, Newbo Exhibition, June 2022.



IBA Todd Schlafer Workshop - June 2022

IBA Members had the privilege of working with Todd Schlafer in June of 2022. This was a great learning opportunity.



IBA Todd Schlafer Workshop, June 2022. From Left to Right: Bob West's arm, as he works on a Juniper virginiana; Todd Schlafer discusses a tree with Jeff Hagen; Fran Venter (silent observer); and Dan Morton and his Trident Maple.



Left: Todd and Dan discuss Dan's Trident Maple, while Fran Venter observes.



Bob West and Todd discuss Bob's Juniper virginiana.



Scott Clark removes soil from a Ponderosa Pine. (Note: June is generally too late for repotting Ponderosa Pine, but it can be done successfully with appropriate aftercare.)



Todd demonstrates proper wiring-in technique.



Todd works on one of John Daufeldt's Blue Spruce.



Todd and Jeff discuss Jeff's White Pine.

Timely Tips - June

Susan Daufedt

Well, here we are – it is summer. Boy is it Summer! It is very hot and windy temperature and windy. Fortunately, nights continue to be cool at this time, giving our trees a welcome break from the heat. I have been watering well in the evenings so that the trees have the night to recover from the hot and dry conditions. I find that I have to water again before 10 in the morning and again around 2 in the afternoon. Not everything needs water on those occasions, but many of the shohin and members of the rose family are requiring water three times during the day when the wind is blowing.

The fungal disease Black spot is right around the corner as the heat and humidity increase. We need to be managing growth and being sure that are trees are getting the right amount and types of nutrients that keep them healthy and looking well.

The Japanese Beetles have arrived. I wish I could un-arrive them. You can put netting over your trees. You can spray for them. You can walk back and forth in your Bonsai Garden with a bucket of soapy water and hand pick the little buggers all day long. Well, you can if you have nothing else to do. I know from experience what they go for. I actually keep roses with my Bonsai – fragrant ones - because they will go for the roses first every time. I also have Dog's Bane, a wild native. The Beetles love that, too. Still, I have to watch my elms and various members of the rose family for Beetles. I spray with Eight the minute I see them on a tree. But I hate doing that. I am also have Beetle traps. These worked well last year. I position them some distance away from the Bonsai and hope that they will draw them away.

Watch your trees' water needs. Some of my trees get watered once a day. Some get watered twice and others three times. Trees in boxes and nursery pots that are planted in collection soil often do not need to be watered daily. Small trees will need less sun and may need water more often. Accent plants are often thirsty little fellows, too, but this can vary depending on what you have. Your trees will dry out a lot faster on windy days. Junipers and spruce are being sprayed with water two to three times a day in my yard. They like this A LOT and it helps to prevent spider mite infestations. I also use a strong spray of water on trees that are susceptible to insect infestation that are NOT prone to fungal infections.

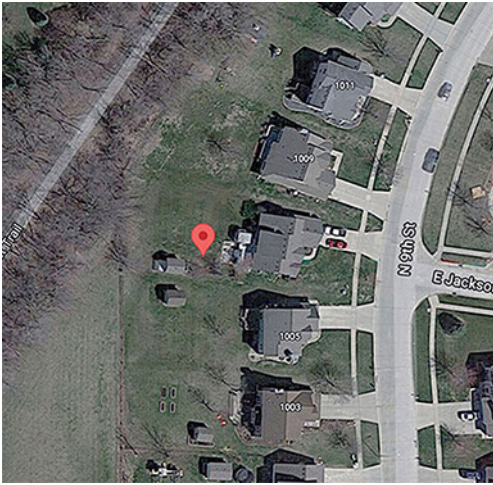
A few words about summer fertilizing – Developing trees need more fertilizer than developed trees. Too much fertilizer on developed trees will cause them to put on undesirable growth and will interfere with ramification. Do not fertilize double flush pine bonsai until after their second flush of needles open. John Denny recommends beginning heavy fertilization about August 15 and continuing through late fall. He also recommends that you wait to fertilize single flush pines like Ponderosa until their needle growth is finished. This will also occur about the middle of August.

This is the time to repot Tropical Trees, if you haven't already done so. They are growing hard. Waiting to repot until too late in the year may weaken your tree, as they may not have enough growing days left to fully recover.

Have a great month and be sure to contact someone in the club for help if you need it. That's why we have a club!

Information in this month's Timley Tips specifically relating to conifers and tropicals was gleaned from prior Timley Tips written by John Denny.

This photographic image was captured on the morning of June 21, 2022, at 7:30 AM Central Standard Time, the longest day of the year. Imagine this scene as a Penjing Landscape.



You can find this imaginary landscape here, 41°22'11.3"N-93°32'53.0"W (See location indicated on the satellite photograph).

The Summer Solstice was known to be celebrated during the period of the Han Dynasty (260BC-220BC). Prior to the Qing Dynasty (1644-1911), the people celebrated a one-day holiday on the day of Summer Solstice. According to Song Dynasty (960-1279) records, officials could have three days off during the Summer Solstice.

The longest day in China is in Mohe in Helongjiang province, located in the northernmost tip of China. On June 21, in Mohe, there are nearly 17 hours of daylight. In Mohe, summer is the best time for seeing the aurora borealis. Mohe is “the sleepless town of China,” especially on June 21st.

You can learn more about Mohe and the Summer Solstice in China at this URL, (See URL Below)

<https://www.studyinchina.com.my/web/page/7-things-you-may-not-know-about-summer-solstice/>

The summer solstice is one of the major annual celebrations in Japan. “Geshi” is a major ritual that takes place on the morning of the summer solstice. Hundreds of people dressed in appropriate attire walk into the sea to greet the rising sun at the rocks of Futami Meoto Iwa.

You can learn more about Geshi and the Summer Solstice in Japan at this URL, (See URL Below)

<https://www.greenshinto.com/2014/06/21/happy-summer-solstice/>

My Bonsai trees are loving the longest day of the year.

Bonsai Classifieds

FOR SALE: IBA T-Shirts – \$25.00 each. Unisex sizes m l xl xxl xxxl. We still have some of the new T-Shirts as well as some of the old ones. New shirts are \$25, the second generation shirts are \$20 and first generation shirts are \$15. All proceeds will help grow bonsai right here in Central Iowa.



DaSu Studio, lowman@netins.net

Has LOTS of Tropicals, new dwarf conifers and 128 new companion plants - many varieties at good prices.

FOR SALE: Trident Maple Seedlings from \$10.00, depending on size. These are fun, rewarding, fast developing and very forgiving trees for beginners to learn deciduous work. I have other deciduous trees available. Contact me if you are interested and I can get you pictures and more information. Susan Daufeldt, sdaufeldt@icloud.com, sdaufeldt@daufeldtlawfirm.com, (319) 430-3822.

FOR SALE: Pumice 50lb bag \$30 , 5 gallon bucket \$15 Need to bring buckets. Medium Akadama \$47 a bag for IBA Members and \$55 a bag for non members. Bio Gold fertilizer from Japan, \$92.50 per 5kg bag. Contact Scott Allen or Tim Peterson.
Lava - Contact DaSu.

Articles in this newsletter are the intellectual property of the authors. If information or ideas are excerpted, paraphrased or duplicated in any way, proper credit must be given to the originator. Authors of articles published here also are expected to respect intellectual property rights and to give credit to sources they use. Neither the Iowa Bonsai Association nor the Eastern Iowa Bonsai Association are responsible or liable for opinions expressed or advice given by contributors in this newsletter. The Publication Staff welcomes letters to the Editor, but reserves the right to determine whether or not publication of any and all content is appropriate and timely.